

RETROGRADE
APPROACH

CROSSING AND
RE-ENTRY DEVICE

IN STENT
RESTENOSIS

STIFF FOR
EXCELLENT
TRACKING

2.9FR/4Fr DEVICE,
0.014"/0.018"
GUIDEWIRE
COMPATIBLE

**ONE CATHETER —
MULTIPLE
APPLICATIONS**



The GoBack™ Crossing Catheter enables crossing & re-entry



 **MULTIPLE APPROACHES**

 **EXCELLENT PUSHABILITY/TORQUABILITY**

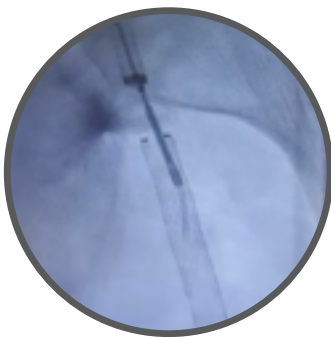
 **TIME SAVING**

Function/Feature	GoBack Catheter™ by Upstream	
	2.9Fr	4Fr
Working Length (cm)	120 / 80	
Catheter shaft outer diameter (mm)	0.96	1.4
Guidewire compatibility (")	0.014"	0.018"
Sheath compatibility (Fr)	5Fr for Cross-Over, 2.9Fr for Antegrade/ Retrograde	6Fr for Cross-Over, 4Fr for Antegrade / Retrograde
REF No.	GB 603 014P 120L / GB 603 014P 80L	GB 600 018P 120L / GB 600 018P 80L

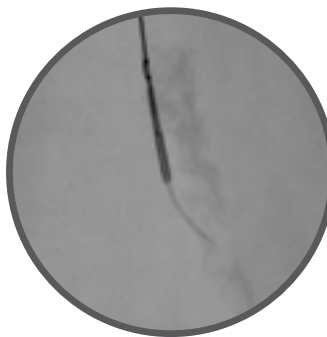
**INTRA-LUMINAL
CROSSING**



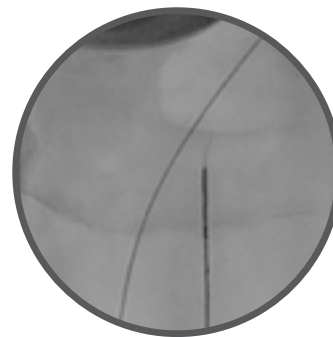
**IN-STENT RESTENOSIS
CROSSING**



**LARGE GAP
RE-ENTRY**



**RETROGRADE
CROSSING & RE-ENTRY**



- Highly stable support from a very low profile 2.9Fr/4Fr catheter compatible with 0.014"/0.018" guidewire
- Effective in crossover, antegrade and retrograde techniques
- Same tool for crossing and re-entry to save time and costs